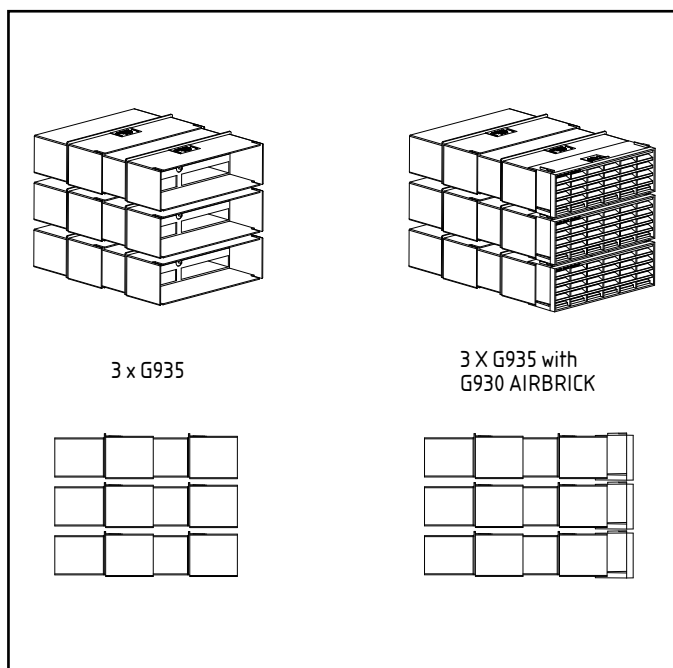
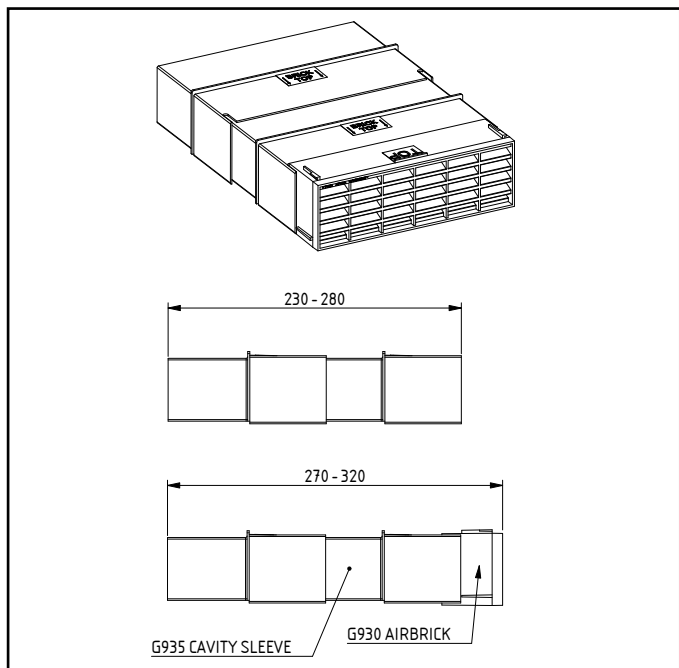
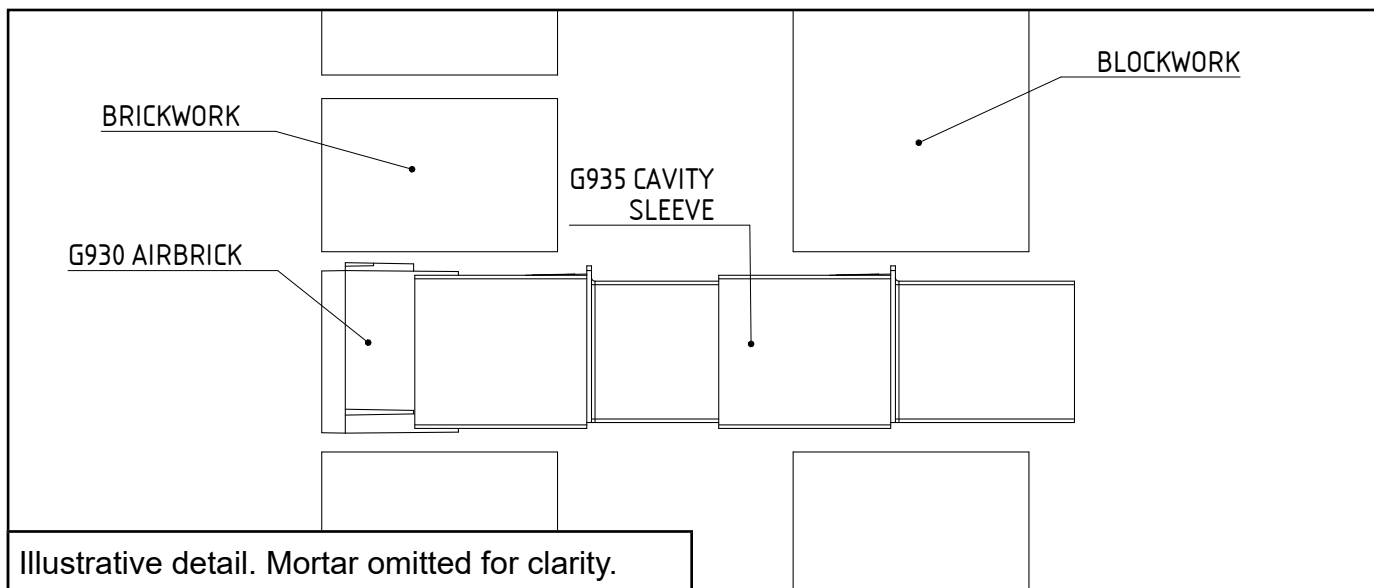


Combination Cavity Sleeve

Code: **G935**



### Fitting Instructions

The G935 combination cavity sleeve should be fitted to the back of a G930 Airbrick and adjusted to fit the desired cavity width.

It can be used in multiple combinations and built into the brick course as normal, although care should be taken to keep the airflow passage clear from mortar droppings.

If fitted above the D.P.C a suitable cavity tray should be fitted above the G935.

This product should be used in conjunction with other products from the Manthorpe 'Through Wall & Underfloor' range to provide a complete ventilation system.

MANTHORPE BUILDING PRODUCTS LTD  
 MANTHORPE HOUSE  
 BRITAIN DRIVE  
 CODNOR GATE BUSINESS PARK  
 RIPLEY  
 DERBYSHIRE DE5 3ND

TEL: 01773 303 000  
 FAX: 01773 303 300  
 EMAIL: mbp.care@manthorpebp.co.uk  
 WEB: www.manthorpebp.co.uk

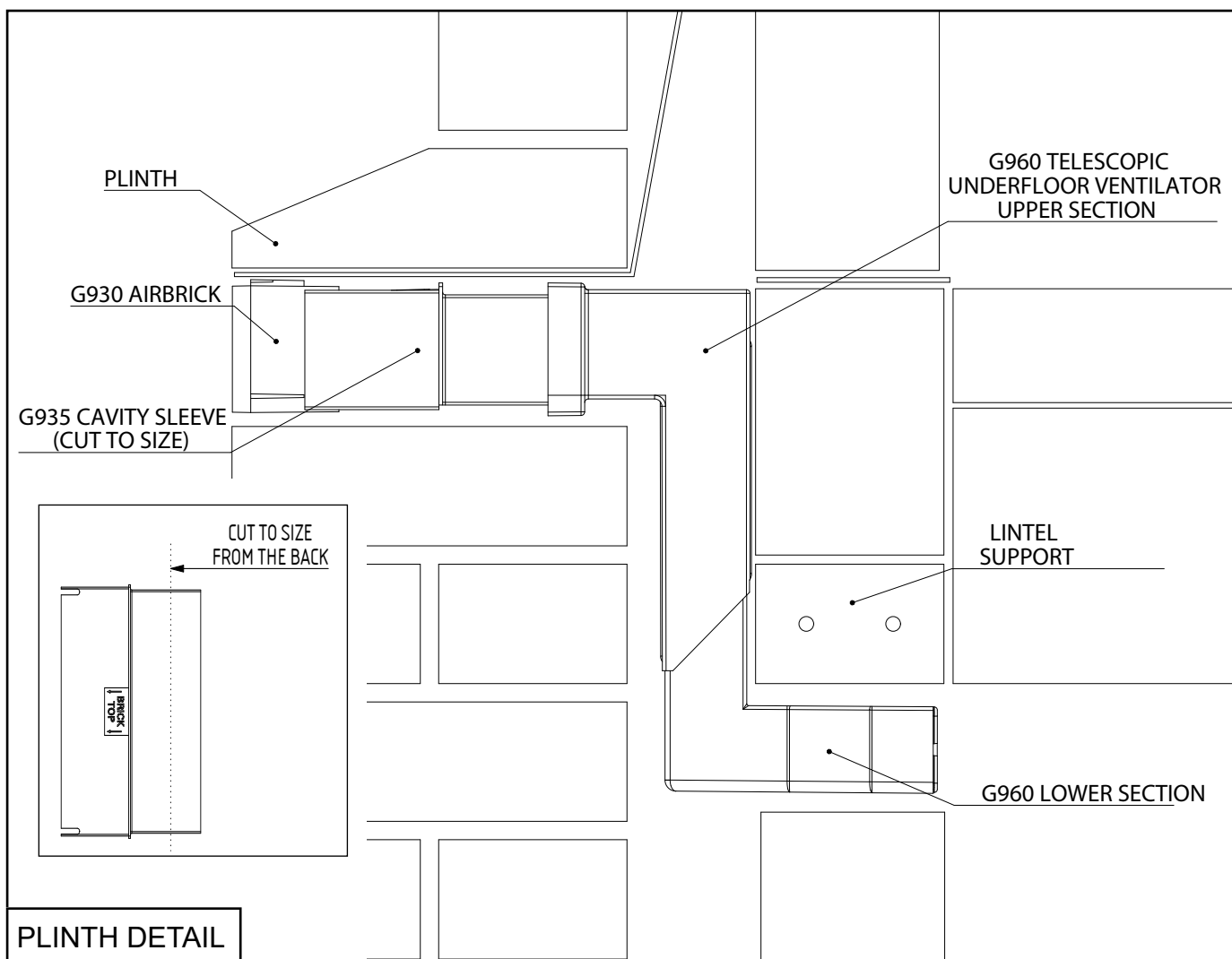
DRN M.O. 05/07/19	ISSUE DRN D.W. 25/05/22
The company maintains a policy of continuous development of its product range and reserves the right to amend the specification without notice.	

DRG No  
**MBP 8055**

Issue  
**3**  
1 of 2

Combination Cavity Sleeve

Code: **G935**



### Description

The G935 can be used in a plinth detail to extend the front of the G960 for external leaf bed depths greater than 100mm. The G935 is pushed into the top section of the G960 and G930 airbrick is pushed into the front of the G935 ensuring the top of the airbrick and the top of the G935 are aligned.

The G935 can be cut down as desired from the back of the product.

Multiple G935 parts can be added together to produce a longer section.

If fitted above the D.P.C a suitable cavity tray should be fitted above the G935.

Bricklaying should then be completed as normal although care should be taken to keep the airflow passage clear of mortar droppings.

Please note this is a not a structural load bearing product. Drawings are illustrative only.

MANTHORPE BUILDING PRODUCTS LTD  
MANTHORPE HOUSE  
BRITAIN DRIVE  
CODNOR GATE BUSINESS PARK  
RIPLEY  
DERBYSHIRE DE5 3ND

TEL: 01773 303 000  
FAX: 01773 303 300  
EMAIL:  
mbp.care@manthorpebp.co.uk  
WEB:  
www.manthorpebp.co.uk

DRN  
M.O. 05/07/19

ISSUE DRN  
D.W. 25/05/22

The company maintains a policy of continuous development of its product range and reserves the right to amend the specification without notice.

DRG No

**MBP 8055**

Issue

**3**  
2 of 2