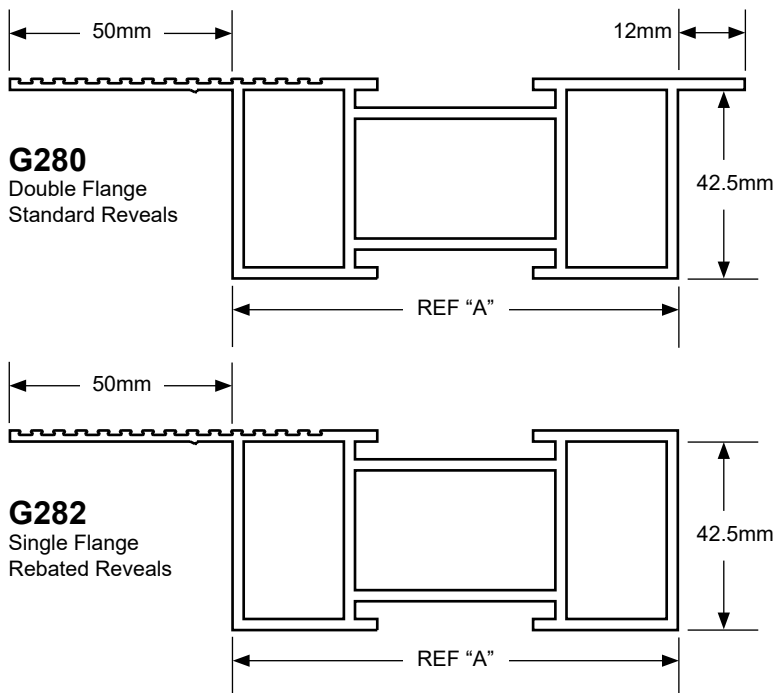
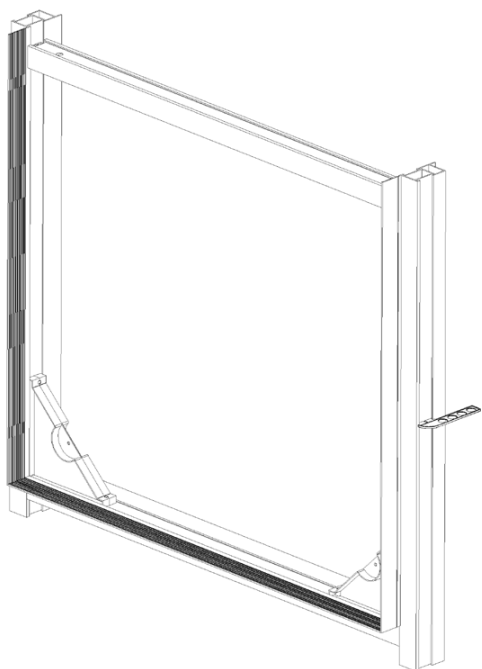


Rigid Frame Former

Code: **G280 / G282**



### Description

The Manthorpe G280/G282 Rigid Frame Former provides a simple time saving solution to cold bridging problems around window and door reveals. The rigid box design allows the cavity walling to be built up to the frame former without the need of manufacturing dummy window formers.

The Manthorpe G280/G282 Rigid Frame Former not only provides a thermal break to the cavity but also acts as an effective DPC barrier.

It is designed to meet building regulations and achieves the required U value at the reveal of door and window openings when the frames are fixed to allow a 30mm or larger overlap into the cavity.

For detailed fitting instructions see product data sheets MBP 8220 / 8218.

### References

Robust Details: Limiting thermal bridging and air leakage  
Building Regulations Part L  
NHBC Standards  
BRE Information Paper IP17  
BSI BS5250

Product Code		REF "A" (Cavity Width)
Double Flange	Single Flange	
G280/85FF	G282/85FF	85 +0/-2mm
G280/90FF	G282/90FF	90 +0/-2mm
G280/100FF	G282/100FF	100 +0/-2mm
G280/110FF	G282/110FF	110 +0/-2mm
G280/120FF	G282/120FF	120 +0/-2mm
G280/130FF	G282/130FF	130 +0/-2mm

	Extrusion	Insulation
<b>Colour</b>	White	Grey
<b>Material</b>	Polypropylene	Expanded Polystyrene
<b>Thermal Conductivity</b>	-	0.03 W/mK
<b>Manufacturing Process</b>	Extrusion	Extrusion

MANTHORPE BUILDING PRODUCTS LTD  
MANTHORPE HOUSE  
BRITAIN DRIVE  
CODNOR GATE BUSINESS PARK  
RIPLEY  
DERBYSHIRE DE5 3ND

TEL: 01773 303 000  
FAX: 01773 303 300  
EMAIL:  
mbp.care@manthorpebp.co.uk  
WEB:  
www.manthorpebp.co.uk

DRAWN	ISSUE DRAWN
M.A. 05/07/04	B.H. 16/11/23

The company maintains a policy of continuous development of its product range and reserves the right to amend the specification without notice.

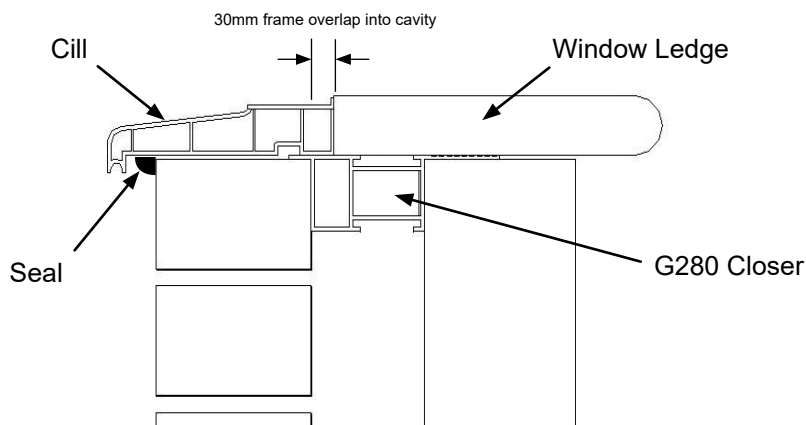
DRG No

**MBP 8219**

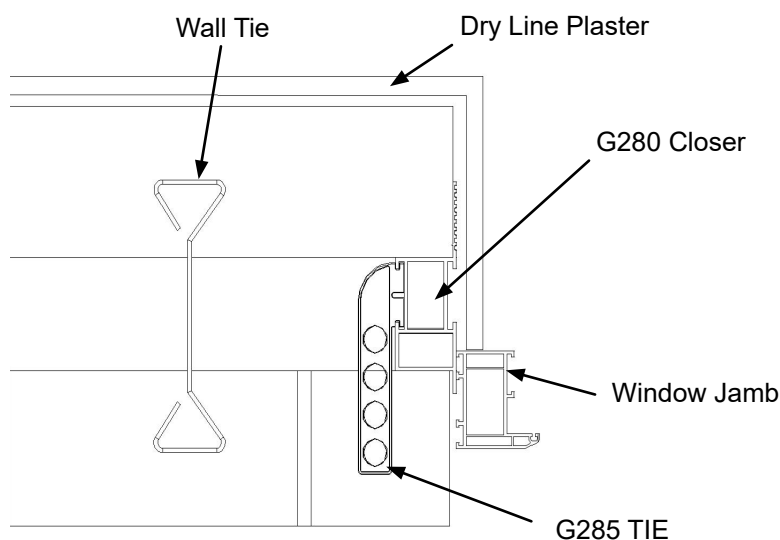
Issue

**05**  
1 of 2

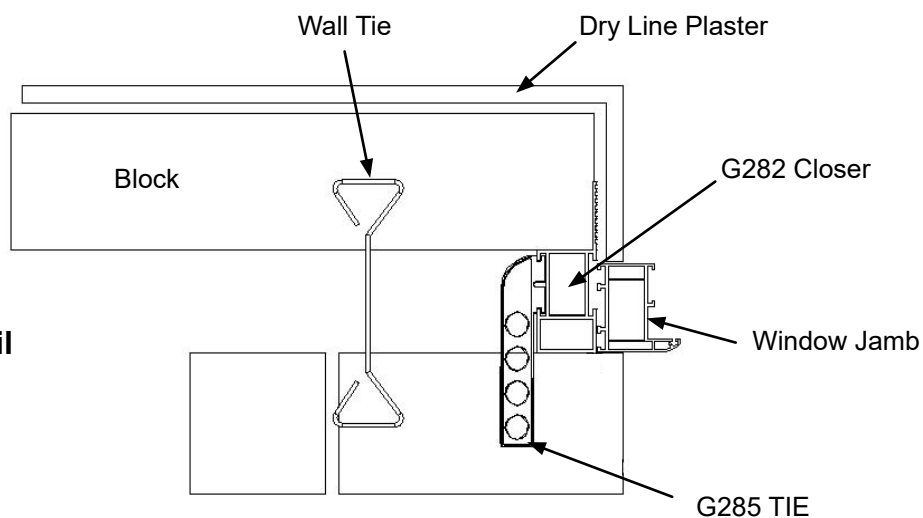
**Cill Detail**  
Using G280  
Rigid Frame Former



**Jamb Detail**  
Using G280  
Rigid Frame Former



**Rebated Jamb Detail**  
Using G282  
Rigid Frame Former



\* All detail drawings are illustrative

MANTHORPE BUILDING PRODUCTS LTD  
MANTHORPE HOUSE  
BRITAIN DRIVE  
CODNOR GATE BUSINESS PARK  
RIPLEY  
DERBYSHIRE DE5 3ND

TEL: 01773 303 000  
FAX: 01773 303 300  
EMAIL:  
mbp.care@manthorpebp.co.uk  
WEB:  
www.manthorpebp.co.uk

DRAWN	ISSUE DRAWN
M.A. 05/07/04	B.H. 16/11/23

The company maintains a policy of continuous development of its product range and reserves the right to amend the specification without notice.

DRG No

**MBP 8219**

Issue

**05**  
2 of 2