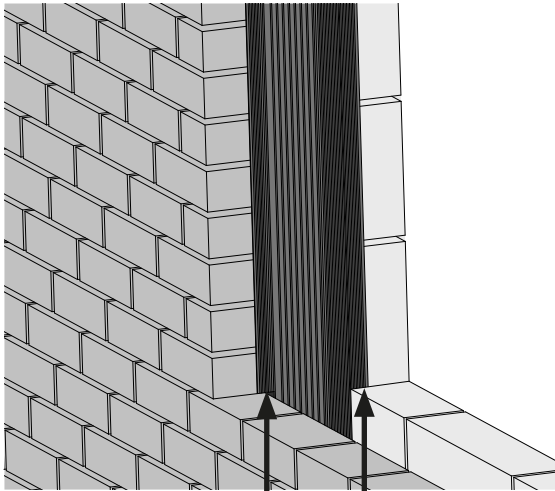


REDSHIELD® Cavity Barrier Installation

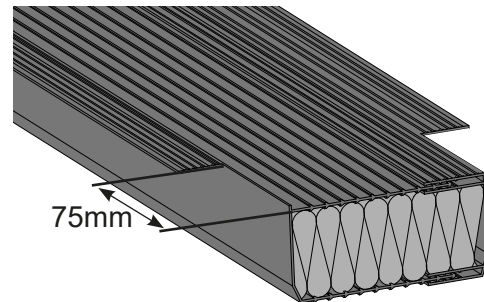
CODE RED/XX/XXX

Preparation: Ensure any excess mortar is removed from along fitting surfaces of the reveal before installation.

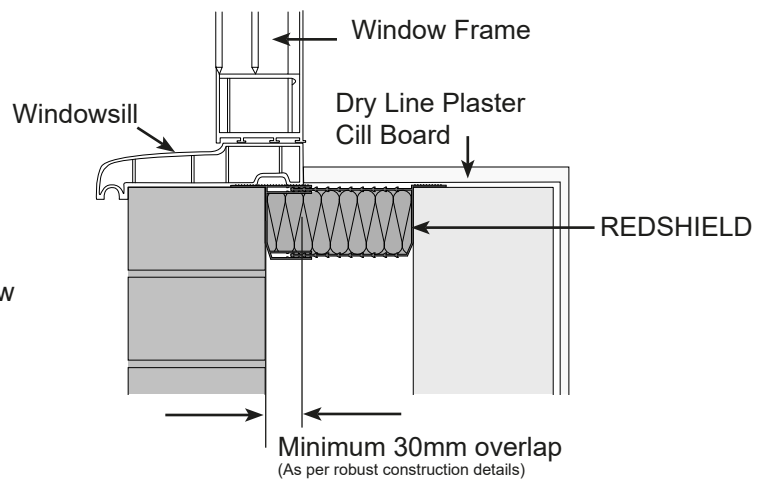
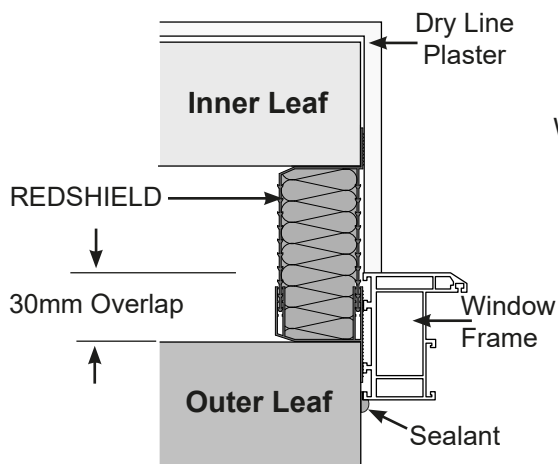


Flanges cut back by 75mm to allow overlap into the cavity below the sill.

1. Measure the height of the reveal and cut the two jamb lengths to be 75mm oversized.
2. Trim back flanges from the lower ends by 75mm to allow it to drop into the cavity below sill level.



3. Each profile will cover a range of cavity sizes and can be compressed by 10mm increments to suit the required openings, see product data sheet size table for further details. All profiles will come supplied in their largest width and can be compressed by at least two times down to their narrowest. Modify the profile to suit your cavity width and press into each of the jamb, ensuring the trimmed ends protrude below the sill level.



4. Cut the lower sill section to width of the opening left between the two installed jamb sections.
5. Compress the sill section to the required cavity width and press into the cavity opening ensuring a tight fit between the jamb profiles at the edges.

Note:- The cavity barrier is non-load bearing and must not be used as replacement for traditional methods of fixing window and doorframes to the masonry.

MANTHORPE BUILDING PRODUCTS LTD
MANTHORPE HOUSE
BRITAIN DRIVE
CODNOR GATE BUSINESS PARK
RIPLEY
DERBYSHIRE DE5 3ND

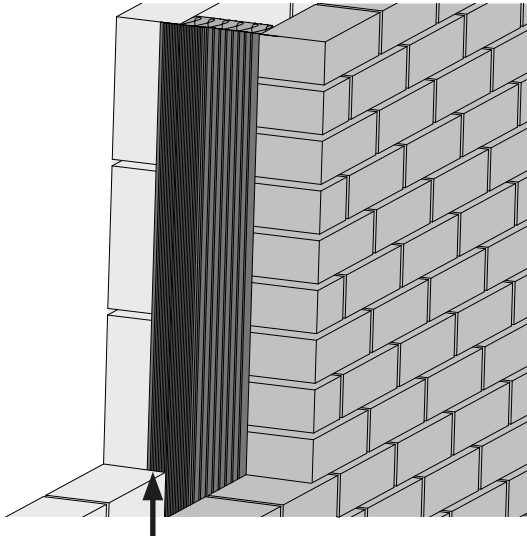
TEL: 01773 303 000
FAX: 01773 303 300
EMAIL:
mbp.care@manthorpebp.co.uk
WEB
www.manthorpebp.co.uk

DRN K.B. Date: 17/02/20
The company maintains a policy of continuous development of its product range and reserves the right to amend the specification without notice.

DRG No
MBP 8362

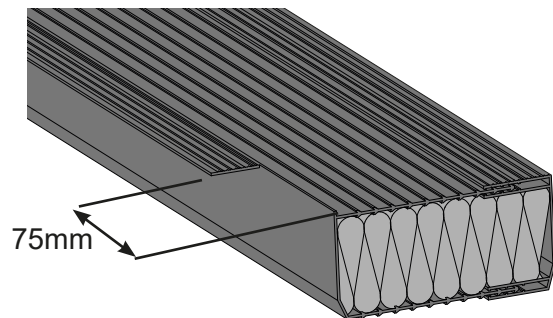
Issue
D
1 of 2

Preparation: Ensure any excess mortar is removed from along fitting surfaces of the reveal before installation.

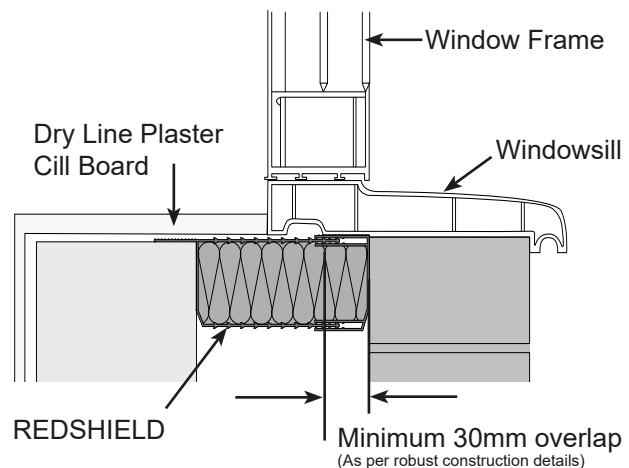
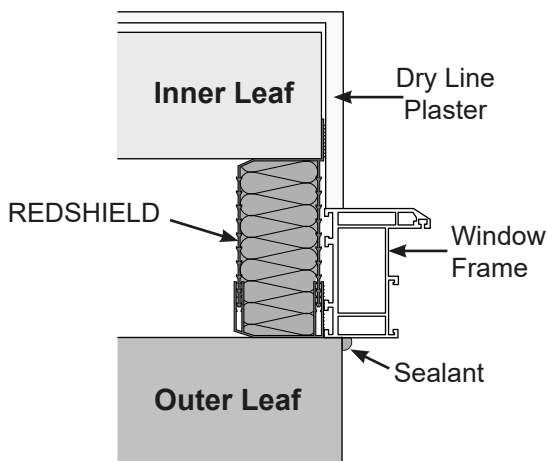


Flange cut back by 75mm to allow overlap into the cavity.

1. Measure the height of the reveal and cut the two jamb lengths to be 75mm oversized.
2. Trim back the flange from the lower ends by 75mm to allow it to drop into the cavity below sill level.



3. Each profile will cover a range of cavity sizes and can be compressed by 10mm increments to suit the required openings, see product data sheet size table for further details. All profiles will come supplied in their largest width and can be compressed by at least two times down to their narrowest. Modify the profile to suit your cavity width and press into each of the jambs, ensuring the trimmed ends protrude below the sill level.



4. Cut the lower sill section to width of the opening left between the two installed jamb sections.
5. Compress the sill section to the required cavity width and press into the cavity opening ensuring a tight fit between the jamb profiles at the edges.

Note:- The cavity barrier is non-load bearing and must not be used as replacement for traditional methods of fixing window and doorframes to the masonry.

MANTHORPE BUILDING PRODUCTS LTD
MANTHORPE HOUSE
BRITAIN DRIVE
CODNOR GATE BUSINESS PARK
RIPLEY
DERBYSHIRE DE5 3ND

TEL: 01773 303 000
FAX: 01773 303 300
EMAIL:
mbp.care@manthorpebp.co.uk
WEB
www.manthorpebp.co.uk

DRN K.B. Date: 17/02/20
The company maintains a policy of continuous development of its product range and reserves the right to amend the specification without notice.

DRG No
MBP 8362

Issue
D
2 of 2