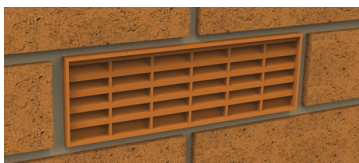
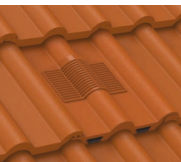
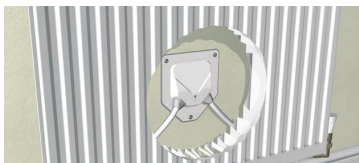


Manthorpe

All Products Guide



Professional solutions for the building industry

From our first venture into the building industry in 1986, through to our latest product innovations, Manthorpe Building Products has grown year on year thanks to a philosophy of continuous investment and development. For over 30 years we have pushed the boundaries of design and pioneered the use of new technologies within the industry to provide our customers with the highest quality building, roofing and plumbing products available.

From our state-of-the-art facilities in the heart of Derbyshire we produce a range of market leading products for every aspect of building construction, from groundwork to the roofline, from newbuild to retrofit. We pride ourselves on offering high quality innovative products and on providing excellent customer service and technical support.

In 2018, after a successful 32-year history, we were acquired by the Polypipe Group.

Tel 01773 303 000 | Email mbp.care@manthorpebp.co.uk



Quality building solutions from Manthorpe

Browse our comprehensive range of innovative building, roofing, plumbing and drainage product solutions:

Loft access doors	4
Access panels	6
Air leakage	7
Dry verge systems	8
Dry fix ridge & hip	12
Tile & slate ventilators	14

A range of tile and slate ventilators designed to provide a simple solution to roof space ventilation & mechanical extraction through a wide variety of roof coverings.

Roof ventilation	18
Through wall & underfloor ventilation	20
Cavity tray systems	22
Cavity closers & frame formers	25
Drainage channels	28
Pipe & cable ducting	29
Environmental	30

Flood defence products designed to prevent water ingress into homes and conservation products to help reduce the impact of buildings within the natural environment.

Loft access doors



Drop Down Loft Access Doors

GL250 All GL250 range doors are Part L compliant 562mm x 726mm fitting size

Draught sealed with a multi point catch mechanism to prevent air leakage. Insulated to reduce heat loss.

White high-impact polystyrene, boxed individually.

GL250 Loft Access Door Range - Insulation Variants

The GL250 range of doors offers insulation values of 0.35 or 0.15 W/m²K

GL250-035-EPS Fitted with 110mm of EPS insulation (0.35)

GL250-035-PU Fitted with 60mm of polyurethane insulation (0.35)

GL250-015-PU Fitted with 150mm of polyurethane insulation (0.15)



Lockable Drop Down Loft Access Doors

GL251 Available with the insulation options above 562mm x 726mm fitting size

The lockable door has all the benefits of the standard door with the added security of a key lock.

White high-impact polystyrene, boxed individually.



Drop Down Loft Access Door (2003 version)

GL250-03 Insulated, Part L compliant door 562mm x 726mm fitting size

Draught sealed with a 3 point catch mechanism to prevent air leakage. Insulated to reduce heat loss.

White high-impact polystyrene, boxed individually.



Push Up Loft Access Door

GL260 / GL260-L 562mm x 562mm fitting size

Fully removable lid with foam seal and double catch. Part L Polyurethane/EPS Insulation available

White high-impact polystyrene, boxed individually.



Lockable Push Up Loft Access Door

GL261 / GL261-L 562mm x 562mm fitting size

A lockable version of the GL260. Part L Polyurethane/EPS Insulation available (GL261-L)

White high-impact polystyrene, boxed individually.



1 Hour Fire Rated Square Loft Door

GL270F 562mm x 562mm fitting size

With draught seals and a mineral wool insulation to help reduce heat loss. Supplied with a 'T' Key catch.

Zinc electro-galvanised mild steel, boxed individually.



Lockable 1 Hr Fire Door - Square

GL271F 562mm x 562mm fitting size

Fitted with draught seals and a mineral wool insulation to help reduce heat loss. Key lock supplied.

Zinc electro-galvanised mild steel, boxed individually.



1 Hour Fire Rated Rectangular Loft Door

GL280F 562mm x 726mm fitting size

With draught seals and a mineral wool insulation to help reduce heat loss. Supplied with a 'T' Key catch.

Zinc electro-galvanised mild steel, boxed individually.



Lockable 1 Hr Fire Door - Rectangular

GL281F 562mm x 726mm fitting size

Fitted with draught seals and a mineral wool insulation to help reduce heat loss. Key lock supplied.

Zinc electro-galvanised mild steel, boxed individually.



2 Section Loft Ladder

GLL256 2.6m floor to floor height

A cost effective simple solution to loft door access. The ladders are compact, lightweight and easy to fit.

Aluminium ladders, boxed individually.



3 Section Loft Ladder

GLL257 3.0m floor to floor height

A cost effective simple solution to loft door access. The ladders are compact, lightweight and easy to fit.

Aluminium ladders, boxed individually.

Access panels

Air leakage



Access Panel

GL50 - 100mm x 150mm
GL100 - 150mm x 200mm

Provides a cost effective solution for easy access to hidden building services behind a ceiling or wall.

White high-impact polystyrene (HIPS), 20 per box.



Access Panel

GL300 - 300mm x 300mm

Provides a cost effective solution for easy access to hidden building services behind a ceiling or wall.

White high-impact polystyrene (HIPS), boxed individually or with 10 bagged units per box.



Fire Rated Access Panels

GL150F / GL130F / GL450F - varying sizes

Provides a 1 hour fire protection for openings in ceilings and walls for access to building services.

Zintec electro-galvanised mild steel, boxed individually.

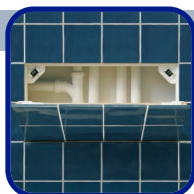


Lockable Fire Rated Access Panels

GL151F / GL131F / GL451F - varying sizes

The 1 hour fire rated doors come complete with a key lock for additional security.

Zintec electro-galvanised mild steel, boxed individually.



Tile Access Panel

GLTAP-500 - variable dimensions
Min 150mm x 150mm / Max 465mm x 465mm

The versatile kit of parts can be quickly assembled to form a concealed access panel within a tiled wall.

Individual kits, packed in boxes of 5.



Tile Access Panel Contractor Pack

GLTAP-5CP - variable dimensions
Min 150mm x 150mm / Max 500mm x 500mm

A cost effective tiled access panel solution aimed at the professional housebuilder and tiler.

5 Access Panel kits per box.



Avoiding heat loss due to air leakage

Builders face constant pressure to make their houses more energy efficient, and buildings that fail to meet air leakage standards can cost thousands of pounds in wasted time and repeat labour. Manthorpe's range of air leakage products are designed to tackle these problems and help the builder to deliver a quality home.



Radiator Pipe Guide & Seal

GRS

Provides an air tight guide for 10mm plastic pipes exiting from behind the plasterboard, significantly cutting air leakage and heat loss.

White polypropylene with TPE seal, 20 per box.



Face Fix Radiator Pipe Guide & Seal

GRS-FF

Mounts directly onto the plasterboard, works with 10mm plastic pipework coming from above, below or the side of the radiator.

White polypropylene with TPE seals, 20 per box.



Single Exit Radiator Pipe Guide & Seal

GRS-SE

Designed for use with larger radiators and 10mm plastic pipe, where the distance from the centre of the radiator is sufficient to cause excessive pipe sag.

White high-impact polystyrene (HIPS), 20 per box.



Joist Seal

G912 - 225mm height
100mm - 140mm depth / 40mm - 150mm width

The G912 range is designed to solve the problems of air leakage associated with built in timber joists.

Translucent polypropylene.



Joist Seal

G913 - 302mm height
100mm - 140mm depth / 38mm - 180mm width

The G913 range is designed to solve the problems of air leakage associated with built in timber joists.

Translucent polypropylene.

Dry verge systems



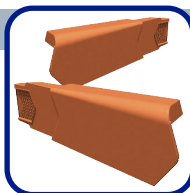
Our dry verge systems have been independently tested to conform with the requirements of BS 8612.



SmartVerge PVCu Dry Verge System

GDV

The versatile modular dry fix SmartVerge system is a fast and effective method for finishing the verge of roof that has been fitted with large format, interlocking concrete roof tiles.



SmartVerge System - Verge Units

GDV RH/LH - right and left hand verge units

A dry verge system designed to provide a cost effective solution avoiding the long term maintenance problems associated with mortar bedding.

Grey, Brown, Black, Terracotta & White uPVC units.



SmartVerge System - Eaves Closer

GDV-EC

The eaves closure unit is the foundation of the system onto which the first verge unit is attached.

Grey, Brown, Black, Terracotta & White uPVC units. Packed in bags of 2 units, 20 bags per box.



SmartVerge System - Rebated Closer

GDV-REC

The rebated eaves closure allows for adequate clearance for extended guttering.

Only available in Black uPVC units. Packed in bags of 2 units, 20 bags per box.

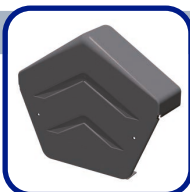


Dry Verge Systems - Ridge End Caps

GDV-END-R - round ridge end cap

The ridge end caps are designed to finish the detail where the two verges meet a round ridge tile.

Grey, Brown, Black, Terracotta & White uPVC units. Packed in bags of 2 units, 10 bags per box.



Dry Verge Systems - Ridge End Caps

GDV-END-A - angled ridge end cap

The ridge end caps are designed to finish the detail where the two verges meet an angled ridge tile.

Grey, Brown, Black, Terracotta & White uPVC units. Packed in bags of 2 units, 10 bags per box.



Linear Dry Verge System

GLV

The linear dry verge system provides a mechanically secured dry fix solution for finishing the verge. For use with low profile covering such as slates, interlocking plain tiles and some flat concrete tiles.



Linear System - Verge Units

GLV RH/LH - right and left hand verge units

A fast & easy to install, dry fix solution to finishing the verge of a roof covered with slate or flat concrete tiles.

Available in Black, Slate Grey, Dark Brown, Terracotta & White uPVC units.



Linear System - Fixing Clip

GLV-FC

The fixing clip secures the lower end of the system onto which the first verge unit is attached.

Only available in Slate Grey uPVC units. Packed in bags of 2 units, 10 bags per box.

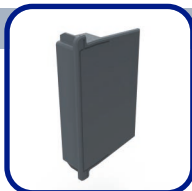


Linear System - Verge Union

GLV-VU

The verge union is used to cover over the joint between two verge units at a change of pitch.

Black, Slate Grey, Dark Brown, Terracotta uPVC units. Packed in bags of 2 units, 10 bags per box.



Linear System - Eaves End Closers

GLV-EE

The eaves end closer is designed to cover over the open end of the bottom linear dry verge unit.

Black, Slate Grey, Dark Brown, Terracotta uPVC units. Packed in bags of 2 units, 10 bags per box.

GDV & GLV Dry Verge Systems - Colour Range

Grey



Brown



Terracotta



Black



White



This is a graphical representation of the colours.

Dry verge systems



Our dry verge systems have been independently tested to conform with the requirements of BS 8612.



SmartVerge Polypropylene Dry Verge System GPPV

The versatile modular dry fix SmartVerge system is a fast and effective method for finishing the verge of roof that has been fitted with large format, interlocking concrete roof tiles.



SmartVerge Ambidextrous Dry Verge System GPPV-AMBI

The ambidextrous dry verge system provides a mechanically secured dry fix solution for finishing the verge. For use with small and large format, interlocking concrete roof tiles.

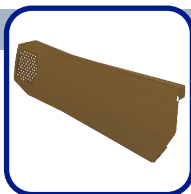


SmartVerge Polypropylene - Verge Units

GPPV RH/LH - right and left hand verge units

A dry verge system designed to provide a cost effective solution avoiding the long term maintenance problems associated with mortar bedding.

Grey, Brown, Black & Terracotta units.



SmartVerge Ambidextrous - Verge Units

GPPV-AMBI ambidextrous verge units

A dry verge system designed to provide a cost effective solution avoiding the long term maintenance problems associated with mortar bedding.

Grey, Brown, Black & Terracotta units.



SmartVerge Polypropylene - Rebated Closer

GPPV-REC

The rebated eaves closure unit is the foundation of the system onto which the first verge unit is attached.

Only available in Black uPVC units.

Packed in bags of 2 units, 20 bags per box.



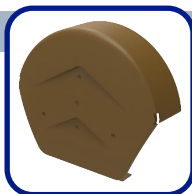
SmartVerge Ambidextrous - Rebated Closer

GPPV-REC

The rebated eaves closure unit is the foundation of the system onto which the first verge unit is attached.

Only available in Black uPVC units.

Packed in bags of 2 units, 20 bags per box.



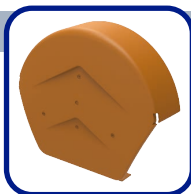
Polypropylene Systems - Ridge End Caps

GPPV-END-R - round ridge end cap

The ridge end caps are designed to finish the detail where the two verges meet a round ridge tile.

Grey, Brown, Black & Terracotta units.

Packed in bags of 2 units, 10 bags per box.



Polypropylene Systems - Ridge End Caps

GPPV-END-R - round ridge end cap

The ridge end caps are designed to finish the detail where the two verges meet a round ridge tile.

Grey, Brown, Black & Terracotta units.

Packed in bags of 2 units, 10 bags per box.



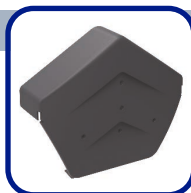
Polypropylene Systems - Ridge End Caps

GPPV-END-A - angled ridge end cap

The ridge end caps are designed to finish the detail where the two verges meet an angled ridge tile.

Grey, Brown, Black & Terracotta units.

Packed in bags of 2 units, 10 bags per box.



Polypropylene Systems - Ridge End Caps

GPPV-END-A - angled ridge end cap

The ridge end caps are designed to finish the detail where the two verges meet an angled ridge tile.

Grey, Brown, Black & Terracotta units.

Packed in bags of 2 units, 10 bags per box.

GPPV Dry Verge Systems - Colour Range

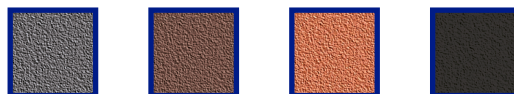
Grey Brown Terracotta Black



This is a graphical representation of the colours.

GPPV Dry Verge Systems - Colour Range

Grey Brown Terracotta Black



This is a graphical representation of the colours.

Dry fix ridge & hip



Our ridge/hip systems have been independently tested to conform with the requirements of BS 8612.



Roll-Out Dry Ridge Systems

Mechanically fitted systems which securely fix the ridge tiles onto a roof. The dry fix ridge roll also provides 5,000 mm²/m of ventilation to the roof void.

Systems to suit concrete and thicker clay ridge tiles, available in 3 & 6 metre lengths (clay 6m only).



Roll-Out Dry Ridge System - 6m

GDRR - for round & angled ridges

A mechanically fitted system which securely fixes the ridge tiles onto a roof. The dry fix ridge roll provides 5,000 mm²/m of ventilation to the roof void.

6m vent roll / 13 ridge unions / 10 batten supports.



Roll-Out Dry Ridge System - 3m

GDRR - for round & angled ridges

A mechanically fitted system which securely fixes the ridge tiles onto a roof. The dry fix ridge roll provides 5,000 mm²/m of ventilation to the roof void.

3m vent roll / 7 ridge unions / 5 batten supports.



Roll-Out Clay Ridge System - 6m

GDRR-CL - for round & angled ridges

A mechanically fitted system which securely fixes clay ridge tiles onto a roof. The dry fix ridge roll provides 5,000 mm²/m of ventilation to the roof void.

6m vent roll / 13 clay unions / 10 batten supports.



Dry Fix - Ridge/Hip Unions

GDRR-RU

Sits in the gaps between each of the ridge or hip tiles, holding them in place, providing a mechanical fixing to the roof. Can flex to suit both round and angled tiles.

Unions sold separate to ridge kits as a pack of 12.



Dry Fix - Clay Unions

GDRR-CU

Sits in the gaps between traditionally thicker clay ridge or hip tiles, providing a mechanical fixing to the roof. Can flex to suit both round and angled tiles.

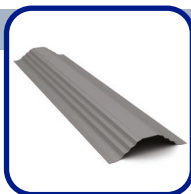
Unions sold separate to ridge kits as a pack of 12.



Roll-Out Dry Hip System

GDRH - for round & angled hips / concrete ridges
GDRH-CL - for round & angled hips / clay ridges

A mechanically fitted system which securely fixes the hip tiles onto a roof. Provides 5000mm²/m ventilation. 6m vent roll / 13 ridge unions / 6 1.1m hip trays.



Dry Hip Support Trays

GDRH-ST

Fitted above the vent roll when installing a dry hip system to provide a straight and level platform to support the tiles up the hip of the roof.

Sold separate to hip kit as a pack of 10 1.1m trays.



Universal Hip End Closer

GDRH-HC - for round & angled hip tiles

Offers a cost effective dry fix alternative to mortaring in the end of a roll-out hip system, without resorting to expensive block end hip tiles.

Available in black, terracotta, brown & buff, 10 per box.



Dry Fix - Batten Support Brackets

GDRR-BS

Designed to provide a steady, secure platform to fix a horizontal ridge batten at the apex of the rafters into which the ridge tiles are fixed.

Brackets sold separate to ridge kits as a pack of 10.



Mechanical Fixings For Traditional "Wet Fix" Roofing

GDRR-FIXINGS

Mechanical fixings that can be used on a traditionally finished roof to comply with NHBC requirements.

Box of 104 assemblies, equivalent of 8 GDRR kits.



Saddle Clamps

GDRT-SC

The saddle clamp is designed to provide a stable mounting to install a ridge batten to the apex of a truss rafter roof, allowing for a dry fix system to be fitted.

10 clamp assemblies with fixings included per box.

Tile ventilation

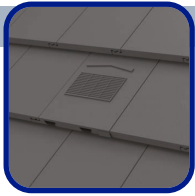


Double Roman Tile Vent

GTV-DR - 10,000 mm² airflow per unit

Provides roofspace ventilation or mechanical extraction through a Double Roman tiled roof.

Slate Grey, Dark Brown, Terracotta & Antique Red uPVC units, 4 per box.



Non-Profile Tile Vent

GTV-NP - 10,000 mm² airflow per unit

Provides roofspace ventilation or mechanical extraction through a flat tiled roof.

Slate Grey, Dark Brown, Terracotta, Black & Antique Red uPVC units, 4 per box.



Castellated Tile Vent

GTV-CS - 10,000 mm² airflow per unit

Provides roofspace ventilation or mechanical extraction through a "square top" tiled roof.

Slate Grey, Dark Brown, Terracotta & Antique Red uPVC units, 4 per box.



Double Pantile Tile Vent

GTV-DP - 10,000 mm² airflow per unit

Provides roofspace ventilation or mechanical extraction through a Double Pantile tiled roof.

Slate Grey, Dark Brown, Terracotta & Antique Red uPVC units, 4 per box.



Thin Leading Edge Tile Vent

GTV-TE - 10,000 mm² airflow per unit

Provides roofspace ventilation or mechanical extraction through a flat, thin leading edge tiled roof.

Slate Grey, Dark Brown, Terracotta, Black & Antique Red uPVC units, 4 per box.



Flat Edge Tile Vent

GTV-FE - 10,000 mm² airflow per unit

Provides roofspace ventilation or mechanical extraction through a Calderdale Edge tiled roof.

Slate Grey, Dark Brown, Terracotta, Black & Antique Red uPVC units, 4 per box.



Mini Castellated Tile Vent

GTV-MC - 5,000 mm² airflow per unit

Provides roofspace ventilation or mechanical extraction through a Standard Pattern / "49 Tile" roof.

Slate Grey, Dark Brown, Terracotta & Antique Red uPVC units, 6 per box.



Single Pantile Tile Vent

GTV-SP - 5,000 mm² airflow per unit

Provides roofspace ventilation or mechanical extraction through a roof covered with single pantiles.

Slate Grey, Dark Brown, Terracotta, Antique Red and Black uPVC units, 6 per box.

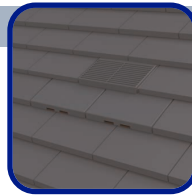


Interlocking Plain Tile Vent

GTV-IP - 6,000 mm² airflow per unit

Provides roofspace ventilation or mechanical extraction through a roof covered with interlocking plain tiles.

Slate Grey, Dark Brown, Terracotta & Antique Red uPVC units, 6 per box.



Plain Tile Vent

GTV-PT - 7,000 mm² airflow per unit

Provides roofspace ventilation or mechanical extraction through a roof covered with Plain Tiles.

Slate Grey, Dark Brown, Terracotta & Antique Red uPVC units, 6 per box.



Granulated Plain Tile Vents

GTV-PT-GRAN - 7,000 mm² airflow per unit

Provides roofspace ventilation or mechanical extraction when used on a roof covered with sand faced granular Plain Tiles.

uPVC units with a granular finish, 6 per box.

Granulated Plain Tile Vent - Colour Variants

GTV-PT-GRAN-AB - Antique Brown granular finish

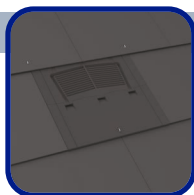
GTV-PT-GRAN-OR - Old Red granular finish

GTV-PT-GRAN-SR - Sand Red granular finish

GTV-PT-GRAN-LB - Light Brown granular finish

Slate ventilation

Flexi pipes

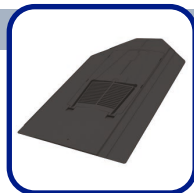


Large Format In-Line Slate Ventilator

GILSV30-25 - 8,8000 mm² airflow

Replaces standard (600mm x 300mm) fibre cement or natural slates for roof ventilation. Built in spigot allows for pipe extraction.

Black and grey polypropylene, 10 per box.

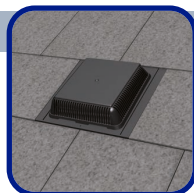


Small Format In-Line Slate Ventilator

GILSV25-20 - 6,000 mm² airflow

Used to ventilate through fibre cement or natural slates of widths between 200 - 250mm. Built in spigot allows for pipe extraction.

Black and grey polypropylene, 10 per box.

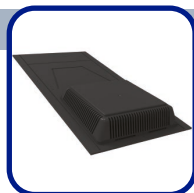


Hooded Slate Ventilator

GRSV30-25 - 10,000 mm² airflow

Replaces standard (600mm x 300mm) slates for roof ventilation. Spigot allows for pipe extraction. Can be cut down to 500 x 250mm.

Black polypropylene, 10 per box.

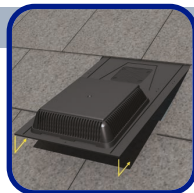


Large Format Slate Ventilator

GRSV45 - 10,000 mm² airflow

Replaces random sized (600mm x 450mm) slates for roof ventilation. Spigot allows for pipe extraction. Can be cut down to 500 x 250mm.

Black polypropylene, 5 per box.



Refurbishment Slate Ventilator

GRSV30-25R - 10,000 mm² airflow

A spigotless version of the slate ventilators to allow for easier installation when fitting into an existing roof. Does not allow for mechanical extraction.

Black polypropylene, 20 per box.



Large Format Refurb Slate Ventilator

GRSV45R - 10,000 mm² airflow

A spigotless version of the slate ventilators to allow for easier installation when fitting into an existing roof. Does not allow for mechanical extraction.

Black polypropylene, 10 per box.



Mechanical Extraction Adaptor

GTV-AD - 8,800 mm² airflow

Allows conversion of the rectangular outlets on the tile vents to a 4" diameter pipe for use with mechanical extraction or soil pipe ventilation.

Black polypropylene, 10 per box.



Flexible Pipe

GRPA - 8,000mm² airflow

A 455mm long flexible coupling pipe to allow for connections between the tile & slate vents and standard 4"/110mm dia. ducting pipes.

Black polyethylene, 10 per bag.



Flexible Pipe

GRPA1 - 8,000mm² airflow

A 645mm long flexible coupling pipe to allow for connections between the tile & slate vents and standard 4"/110mm dia. ducting pipes.

Black polyethylene, 5 per bag.



4" to 3" Adaptor

GRPA3 - 5,280mm² airflow

The GRPA/3 Reduction Adaptor is designed for reducing 4" ducting and flexible pipes in order to make connection to 3" ventilation products possible.

Black PVC, 10 per box.



For further information visit

www.manthorpebp.co.uk

Roof ventilation



Cross Flow Eaves Panels

G400 / G450 / G600 / G620 - 400 to 600 centers
10,000mm²/M & 25,000mm²/M airflows available.

Provides an air passage between the roof felt and loft insulation to enable ventilation of the roof space.

Vacuum formed Black PVC, 50 per box.



Cross Flow Fly Screen Eaves Panels

G405 / G455 / G605 / G625 - 400 to 600 centers
10,000mm²/M & 25,000mm²/M airflows available.

Designed for open eaves details to provide a clear air passage between the roof felt and loft insulation.

Vacuum formed Black PVC, 50 per box.



Continuous Roll Panel Eaves Ventilator

G500 / G502 / G503

400 to 600mm rafter centers, 25,000mm²/M airflow

Provides an air gap between the felt and loft insulation. 325, 650 and 800mm width available.

Vacuum formed Black PET, 2 x 6m rolls per box.

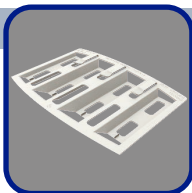


Abutment Flash Ventilator

G1105 - 5,000mm²/M airflow

A simple, flexible roll-out system which provides continuous airflow at a horizontal roof abutment detail covered with lead flashing.

Black EVA, 1x 3m Roll and 10 clips per box.



Felt Lap Ventilator

G630 - 3,000mm² airflow per unit

A refurbishment product designed to increase the ventilation into existing roof spaces which are experiencing problems with condensation.

White polypropylene, 50 per box.



Eaves Comb Filler

G1275 - 1m long

Complete with flexible fingers that adjust to fill the gaps left when using profiled tiles preventing entry of birds and large insects beneath the tiles.

Black polyethylene, 50 x 1m lengths per box.



Felt Support Tray

G1280 - 625mm long

Fits any rafter centres and provides support for the roofing felt, eliminating rot caused by sagging felt retaining water at the eaves.

Vacuum formed Black PVC, 50 per box.



Refurbishment Felt Support Tray

G1281 - 1.5m long

Designed for replacement of old perished felt at eaves level. Alternatively it can be used in new build situations and suits all rafter centres.

Extruded Black PVC, 10 per pack.



Over Fascia Ventilator

G1200N / G2500N - 1m long

10,000mm²/M (G1200N) & 25,000mm²/M (G2500N)

Discreetly ensures a positive airflow into the roof space between the felt and the fascia board.

Black polypropylene, 20 x 1m lengths per box.



Continuous Soffit Ventilator

G800 / G825 - 2.44m long

10,000mm²/M & 25,000mm²/M airflows available.

Provides roof ventilation for a traditional fascia board. Alternative designs available for varying fascia styles.

White, Brown and Black (G800 only) uPVC, 10 per pack.

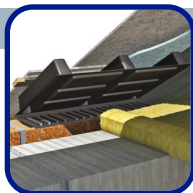


Circular Soffit Ventilator

G700 - 2,150mm² airflow per unit

Designed to be fitted before or after installation of soffit boards. Airflow passage consists of evenly spaced slots specifically sized to prohibit entry of large insects.

White, Brown and Black polypropylene, 50 per box.



Refurbishment Eaves Panels

G435 / G645

400 & 600mm rafter centers, 25,000mm²/M airflow

Designed to be used in refurbishment situations and are fitted from within the roof space.

Vacuum formed Black PVC, 50 per box.

For further information visit

www.manthorpebp.co.uk

Underfloor vents



Combination Airbrick

G930 - 6,450mm² airflow per unit

Designed to provide high levels of ventilation into cavity walls and under floor voids, the 9"x3" brick can also be combined to create a 9"x6" and 9"x9" airbrick.

Polypropylene in various colours, 20 per box.



Dual Extended Telescopic Underfloor Vent

G965 - 8,000mm² airflow - With a 5-8 course drop

Provides an unobstructed airflow path down to the void space beneath an insulated suspended floor, also passing through an insulated cavity wall.

Black polypropylene, 16 per box.

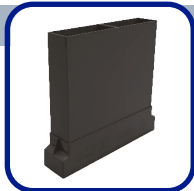


Telescopic Underfloor Vent

G960 - 6,600mm² airflow - With a 3 to 5 course drop

Provides a clear airflow path to the void underneath a suspended floor. Extension sleeves can add further vertical and horizontal extensions in the cavity.

Black polypropylene, 20 per box.



Extension Sleeve

G961 - 7,000mm² airflow

Increases the adjustment of the underfloor ventilators by two brick courses vertically and adds extra horizontal extension through larger cavities.

Black high-impact polystyrene (HIPS), 20 per box.



Remote Void Ventilator

G962 - 8,800mm² airflow

Designed to connect the G930 Air Brick or G960 Under Floor Vent to a 4" Round Pipe or alternatively Manthorpe's GRPA Flexible Pipe.

Black high-impact polystyrene (HIPS), 10 per box.



Flexible Pipe Range

GRPA / GRPA1 - 8,000mm² airflow

A range of flexible coupling pipes of varying lengths to ventilate 4"/110mm pipes or to connect mechanical extraction with our Tile & Slate Vents. *See page 17.*

Black polyethylene, bagged in 10's (GRPA1 in 5's).

Through wall vents



5" Core Drill Vent

G900 - 100cm² free area (70cm² with baffle)

For use when ventilating a gas appliance or for general through wall ventilation.

Brown, Terracotta and White cowls, louvre supplied in White polypropylene, boxed individually.

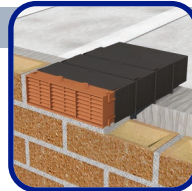


Large Backplate 5" Core Drill Vent

G901 - 100cm² free area (70cm² with baffle)

The large backplate covers any masonry damage caused whilst creating the hole for the pipe.

Brown, Terracotta and White cowls, louvre supplied in White polypropylene, boxed individually.

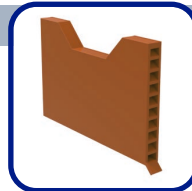


Combination Cavity Sleeve

G935 - 6,600mm² airflow

Fits the back of a G930, it can be stacked to form 9"x6" or 9"x9" formations. Adjusts to fit cavity widths of 50mm to 100mm, more possible with extra units.

Black high-impact polystyrene (HIPS), 10 per box.

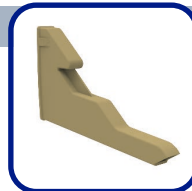


Weep Vent

G950 - 220mm² free area

Used to drain moisture from lintels and cavity trays as well as to ventilate cavity walls.

Terracotta, Buff, Black, Blue/Black, Brown, Clear, Grey and White polypropylene, 50 per box.



Peep Weep

G951

Unobtrusive solution to draining cavity walls. Hood feature to prevent blockage during installation and use.

Terracotta, Buff, Clear, Blue/Black and Brown Polypropylene, 100 per box.



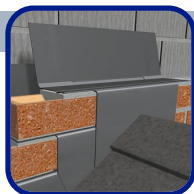
Refurbishment Weep Vent

G952 - 260mm² free area

Provides cavity wall ventilation to existing walls to solve the problem of missing or inadequate ventilation.

Terracotta, Buff, Black, Blue/Black, Brown, Clear, Grey and White polypropylene, 50 per box.

Cavity trays



Apex Tray

GW290 - 731mm long

Last tray to be fitted at the top of the abutment. Allows the water to be evenly dispersed down either side of the abutment.

Black polypropylene, 25 per box.



Brickwork Intermediate Trays - RH/LH

GW291 - right hand 317mm long
GW292 - left hand 317mm long (shown on image)

Up stand at one end allows the water to run out of the tray down onto the system below.

Black polypropylene, 25 per box.



Brickwork Catchment Tray

GW293 - 330mm long

Located at the lowest point of the abutment. Ensures that the water run off from the trays above is collected and safely diverted out of the wall via a weep vent.

Black polypropylene, 25 per box.



Brickwork Corner Catchment Tray

GW293CC RH - right hand 330mm x 214mm
GW293CC LH - left hand 330mm x 214mm

Designed for situations where an abutment ends at a corner to shield the corner from water entry.

Black polypropylene, 25 per box.

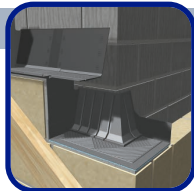


Stone/Blockwork Intermediate Trays - RH/LH

GW291 - SBS/LBS - right hand
GW292 - SBS/LBS - left hand (shown on image)

Stepped trays suitable for 150mm and 225mm stone and blockwork coursing. 2 tray lengths available.

Black polypropylene, 25 per box.

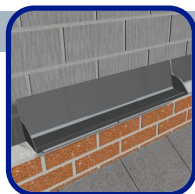


Stone/Blockwork Catchment Trays - RH/LH

GW293 - BSRH/BSLH - 330mm long
GW293CC - BSRH/BSLH - 330mm x 219mm

Suitable for 150mm/225mm stone/blockwork. Located at the lowest point of the abutment run.

Black polypropylene, 25 per box.



Horizontal Tray

GW295 - 900mm long, 155mm high

For straight horizontal abutments in new build situations. Integral interlocking stop ends and a hook feature removes the need for overlap.

Black polypropylene, 25 per box.

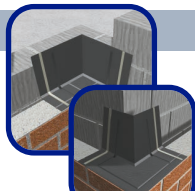


Refurbishment Tray

GW294 - 450mm long, 155mm high

Designed for refurbishment details where a new abutment meets an existing wall. A run of 3 bricks can be removed to allow the shorter tray to be inserted.

Black polypropylene, 25 per box.

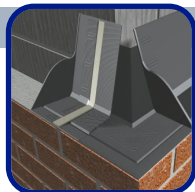


Internal & External Corners

GW296 - Internal 194mm x 194mm, 155mm high
GW297 - External 265mm x 265mm, 155mm high

For use where a horizontal cavity tray system changes direction around an internal or external corner.

Black polypropylene, 25 per box.

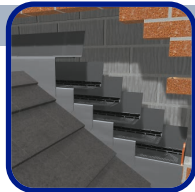


Stop Ends

GW298 - right hand 83mm long, 155mm high
GW299 - left hand 83mm long, 155mm high

Designed for use with the horizontal cavity tray system is cut down, preventing water entering the cavity.

Black polypropylene, 25 per box.



Pre-Flashed Cavity Trays

Code 4 or 5 lead & Performance Flashing

Cavity trays are available with pre fitted traditional lead or Performance lead replacement attached. Flashings available to suit various detail and pitch requirements.

Flashed trays made to order, contact sales for details.



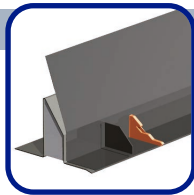
SmartFlash - Lead Replacement Rolls

GWFSF-140 / 280 / 370 / 560

140 to 560mm roll widths available in a 5M roll length

SmartFlash is a safe and secure modern alternative to traditional lead flashings. Comprising of a flexible aluminium mesh embedded within a robust polymer rubber complete a self adhesive mastic backing.

Lintel trays

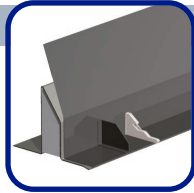


Lintel Tray

GW281 - 400mm roll width, 100mm vertical height

The pre-creased design enables the tray to be folded up easily on site. The rigidity allows it to support itself, eliminating the need to build it into the inner leaf wall.

Black polypropylene, 5m or 25m rolls.

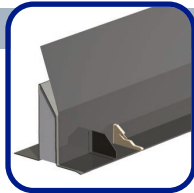


Lintel Tray

GW282 - 463mm roll width, 163mm vertical height

The pre-creased design enables the tray to be folded up easily on site. The rigidity allows it to support itself, eliminating the need to build it into the inner leaf wall.

Black polypropylene, 5m or 25m rolls.

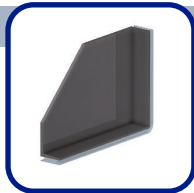


Lintel Tray

GW283 - 530mm roll width, 230mm vertical height

The pre-creased design enables the tray to be folded up easily on site. The rigidity allows it to support itself, eliminating the need to build it into the inner leaf wall.

Black polypropylene, 5m or 25m rolls.

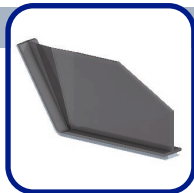


Lintel Stop Ends

G955 - 90° stop ends right and left hand

Designed to prevent water spilling off the ends of lintel trays into the cavity below. Supplied with an adhesive tape attached to fix the stop ends to the tray.

Black Polypropylene, 25 pairs per box.

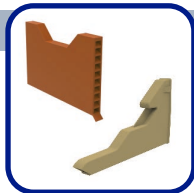


Adjustable Lintel Stop Ends

G956 - adjustable stop end, for both hands.

Designed for use with lintel trays set at an angle into the cavity. The adjustable back of the stop end can be set to the required angle, ensuring the perfect fit.

Black Polypropylene, 50 per box.



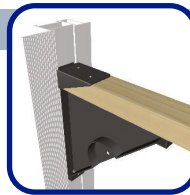
Weep Vents / Peep Weeps

G950 - Weep Vent
G951 - Peep Weep

Can be fitted to help drain abutment cavity tray, dpc tray and lintel tray details. *See page 21.*

Polypropylene, available in various colours.

Rigid frame formers

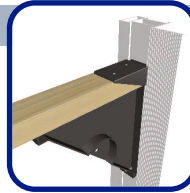


Rigid Frame Former - Double Flange

G280 - 75mm to 130mm cavity widths available

Combines a cavity closer with a rigid framework. A time saving and cost effective alternative to 'made on site' timber equivalents.

White uPVC extrusions with a polystyrene insulation.



Rigid Frame Former - Single Flange

G282 - 75mm to 130mm cavity widths available

Combines a rebated cavity closer with a rigid frame work. A time saving and cost effective alternative to 'made on site' timber equivalents.

White uPVC extrusions with a polystyrene insulation.



P-Shape Formers

Double and Single Flange versions available

"P-shaped" frames can be formed for use in details with an adjacent smaller window to the right of the main window or door opening.

White uPVC extrusions with a polystyrene insulation.



Q-Shape Formers

Double and Single Flange versions available

"Q-shaped" frames can be formed for use in details with an adjacent smaller window to the left of the main window or door opening.

White uPVC extrusions with a polystyrene insulation.



T-Shape Formers

Double and Single Flange versions available

A double sided "T-shaped" frame can be produced for use in details with an adjacent smaller window on both sides of the main window or door opening.

White uPVC extrusions with a polystyrene insulation.



Made Up / Flat Pack

FF - Made up frame former reference
FP - Flat pack frame former reference

The frames are made to size and can be transported ready assembled or flat packed to save on transport and storage costs (recommended for larger frames).

Cavity closers

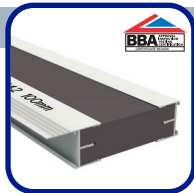


Thermal Cavity Closer - Double Flange

G240 - 50mm to 150mm cavity widths available.¹

For standard vertical cavity and sill details. Provides an economical solution to cold bridging problems.

White uPVC extrusions with polystyrene insulation, 2.5m lengths packed in 6's.



Thermal Cavity Closer - Single Flange

G242 - 50mm to 150mm cavity widths available.¹

For rebated vertical cavity and sill details. Provides an economical solution to cold bridging problems.

White uPVC extrusions with polystyrene insulation, 2.5m lengths packed in 6's.



Double Flange Flexible Cavity Closers

G243 - double flange 50mm to 150 cavity widths.¹

For standard reveals with circular or arched openings with a minimum 500mm diameter.

White uPVC extrusions with polystyrene insulation, 2.5m lengths packed to order.

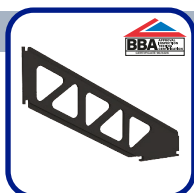


Single Flange Flexible Cavity Closers

G244 - single flange 50mm to 150 cavity widths.¹

For rebated reveals with circular or arched openings with a minimum 500mm diameter.

White uPVC extrusions with polystyrene insulation, 2.5m lengths packed to order.

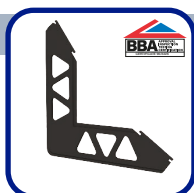


Fixing Clips

G245

Ties the closer into the brickwork coursing. Can also be used to join lengths of cavity closer together. For use with G240, G242, G241 & G241M closer profiles.

Black Polypropylene, 100 per bag.



Right Angle Fixing Clips

G246

Used to form an on site cavity frame out of lengths of closer. For use with G240, G242, G241 & G241M closer profiles.

Black Polypropylene, 50 per bag.

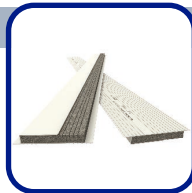


Multi-Width Double Flange Cavity Closer

G247M - 50 to 100mm width, or trimmed to fit.

Designed to enable the stockist to hold one size which can be easily trimmed to suit specific cavity widths.

White uPVC extrusion with expanded polystyrene insulation, 2.44m lengths packed in 6's.



Multi-Width Double Flange Cavity Closer

G247M-150 - 100 to 150mm width, trimmed to fit.

Designed to enable the stockist to hold one size which can be easily trimmed to suit specific cavity widths.

White uPVC extrusion with expanded polystyrene insulation, 2.44m lengths packed in 6's.



Fire Rated Cavity Closer

G249F - standard reveal double flange 50mm to 130mm cavity widths available.

½ hour fire rated barrier for window and door reveals.

White uPVC extrusions with compressed mineral fibre wool insulation, 2.4m length 3 per pack.



Fire Rated Cavity Closer

G249R - rebated reveal single flange 50mm to 130mm cavity widths available.

½ hour fire rated barrier for window and door reveals.

White uPVC extrusions with compressed mineral fibre wool insulation, 2.4m length 3 per pack.

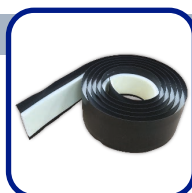


TDI Stonecor

GSC165 - 165mm wide fire rated insulated DPC
GSC225 - 225mm wide fire rated insulated DPC

For closing the cavity with a returned blockwork detail.

Foil faced mineral wool backed with polyethylene DPC. 10 metre rolls, 5 rolls per bag.



TDI Damcor

DC165 - 165mm wide insulated DPC
DC225 - 225mm wide insulated DPC

For closing the cavity with a returned blockwork detail.

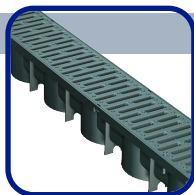
EVA foam insulation backed with polyethylene DPC. 6 metre rolls, 8 rolls (DC165) or 6 rolls (DC225) per bag.

¹ Additional widths are also available to order up to 350mm

² Additional widths are also available to order up to 150mm

Drainage channels

Pipe & cable ducts



SmartDrain Channel & Black Grate

GPD-1000 - 1m long

An easy and effective way of removing troublesome standing water from around a property.

Polypropylene, packed individually or 48/96 per pallet.



SmartDrain Channel & Silver Grate

GPD-1000-SLV - 1m long

Drainage solution, complete with metallic effect silver grate covering.

Polypropylene, packed individually or 48/96 per pallet.



Junction Unit & Grate (Black or Silver Grate)

GPD-JU-12-BL / GPD-JU-12-SLV

Enables the creation of a variety of drainage junction options; 90° corners, T-junctions & 4-way junctions.

Polypropylene, 12 per box.



Accessory Pack

GPD-AP

Pack consists of 2 channel endcaps, 1 leaftrap and a set of fitting instructions.

Polypropylene, all components sealed in a bag.



Slot Drain

GPDST-1000 - 1m long

A discreet drainage option for use with block paving and other paving options. Ideal for door thresholds.

Polypropylene, packed individually or 48/96 per pallet.



Slot Drain Junction Unit

GPDST-JU - 4 way outlet extension sleeve

Enables the creation of a variety of drainage junction options, providing access for cleaning and rodding.

Polypropylene, 6 per box.



Pipe & Cable Ducting

GW510 - duct - 3m long, 90mm wide channel bed

Ideal for internal runs of cables and other services for up to two pipes in concrete screed floors.

White uPVC duct, 10 per pack.



Pipe & Cable Ducting

GW530 - duct - 3m long, 115mm wide channel bed

Ideal for internal runs of cables and other services for up to three pipes in concrete screed floors.

White uPVC duct, 10 per pack.

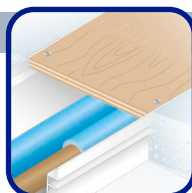


Pipe & Cable Ducting

GW550 - duct - 3m long, 140mm wide channel bed

Ideal for internal runs of cables and other services for up to four pipes in concrete screed floors.

White uPVC duct, 10 per pack.

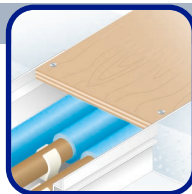


Pipe & Cable Cover Board

GW511 - cover board - 2.44m long, 123mm wide

A made to measure plywood board that simply drops into the recess in the top of the ducting to provide a solid cover to protect the pipe work below.

12mm plywood board, 10 per pack.



Pipe & Cable Cover Board

GW531 - cover board - 2.44m long, 146mm wide

A made to measure plywood board that simply drops into the recess in the top of the ducting to provide a solid cover to protect the pipe work below.

12mm plywood board, 10 per pack.



Pipe & Cable Cover Board

GW551 - cover board - 2.44m long, 171mm wide

A made to measure plywood board that simply drops into the recess in the top of the ducting to provide a solid cover to protect the pipe work below.

12mm plywood board, 10 per pack.

For further information visit

www.manthorpebp.co.uk

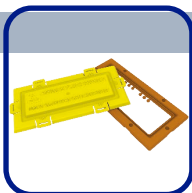
Environmental

Flood defence



Preventing flood damage through airbricks

The airbrick flood defence is a discreet solution to the problems of flood damage caused by unprotected airbricks. In the event of a flood the easy to fit cover prevents water entering the vent, saving sandbags for use in other areas around the property.



Airbrick Flood Defence

G980 - For 9" x 3" airbricks

A solution to the issue of flood damage caused by unprotected airbricks.

Frame available in terracotta, buff, black, blue/black, brown, grey and white, cover in yellow. 10 per box.

Conservation



Saving one of the UK's favourite birds

The population of swifts in the UK has almost halved in the last twenty years due to a reduced number of habitable spaces for them to breed. New nesting boxes are needed to help their numbers recover as they return to our shores to breed every summer.



Swift Nesting Brick

GSWB - Replaces a single 9" x 3" brick

Provide a safe, spacious and habitable area to allow swifts to nest within the well built construction of modern houses.

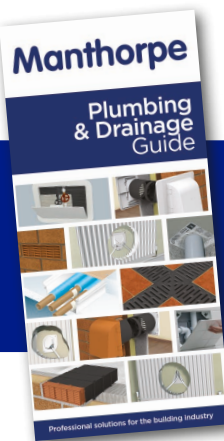
Units are available in a granulated terracotta or antique red finish, boxed in 2s.

Discover more from our range of quality building products



Building Products Guide

Roofing Products Guide



Plumbing & Drainage Guide

Manthorpe

Manthorpe Building Products

Manthorpe House
Brittain Drive
Codnor Gate Business Park
Ripley
Derbyshire
DE5 3ND

Tel +44 (0) 1773 303 000
Fax +44 (0) 1773 303 300
Email: mbp.care@manthorpebp.co.uk
Web: www.manthorpebp.co.uk

